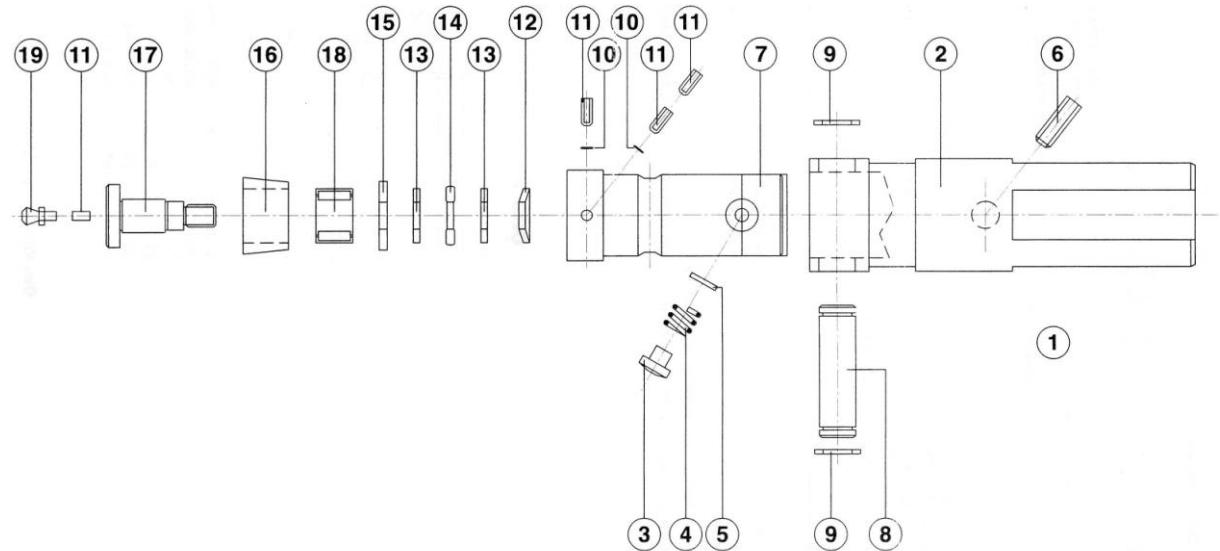




Part. N°	Part Name	Code	N° pcs
1	Assembly		
2	Shank	D3045L-2	1
3	Slug	D3045-3	1
4	Spring	D3045-4	1
5	Slug	D3045-5	1
6	Soc. Set screw	ISO4029-M8X10	1
7	Roller shaft	D3045-7	1
8	Pivot pin	D3045-8	1
9	Retaining rings	JA12	2
10	Brass Slug	D45X3	2
11	Screw	ISO4026-M6X8	3
12	Belle ville spring	CB-31.5/16.3X0.8	1
13	Thrust race	TRB-1018	2
14	Thrust Bearing	NTA-1018	1
15	Distantial	D3090-X1	1
16	Roll 0,78	D044-0	1
16	Roll 1,57	D044-1	1
16	Roll 2,36	D044-2	1
17	Axle	D3090-X2	1
18	Roll's Bearing	HJ101812	1
19	Lubrificator	R17/A-M6X1	1



**SPECIFICATIONS IN THIS SHEET ARE SUBJECT TO CHANGE WITHOUT NOTICE**